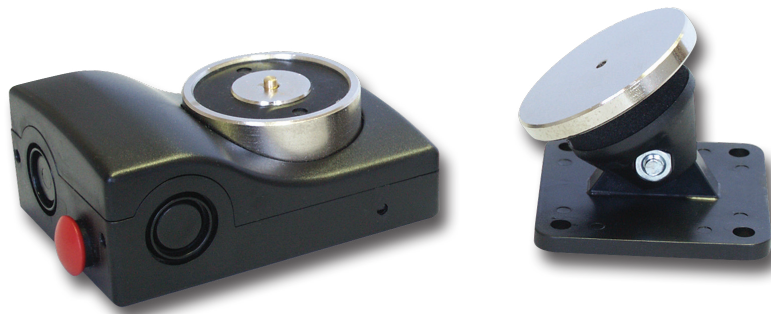
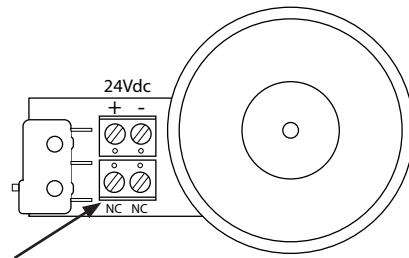


Magnetic Door Holder -



EN1155:1997/A1:2002/AC:2006

3	5	4	1	1	4
---	---	---	---	---	---



DOOR STATUS CONTACT

Technical Data CSA08929

13050-SP

GB Description

The 13050 series electromagnets are used to keep open the fire barrier or passage doors and release them in the event of fire. They are made up of two parts, the electromagnetic nucleus and the counter-plate. A clearly visible release pushbutton is provided, in accordance with the EN 54 standards. The electromagnet should be mounted on the wall, and the counter-plate on the door.

Installation

Make sure that the word "TOP" applied to the counter-plate is facing upwards, to avoid bending that could damage it in the course of time. Using one of the four cable inputs on the plastic body, wire the internal circuit as shown in diagram.

Warning: Even microscopic impurities between the electromagnet and the counter-plate surface, or dents due to accidental shock, will make the perfect joint impossible, causing a significant and proportional reduction in the declared holding force.

Testing

Power the electromagnet and fit the nucleus to the counter-plate by exerting slight pressure. Attraction will take place between the two parts. Press the release pushbutton to detach. Clean the device with a soft cloth at regular intervals. Do not use water.

Technical Specifications

Material	ABS/PC UL94-V0	Rated Voltage	24Vdc
Consumption	42mA (1W)	Holding Force	50Kg - 490N

SP Models (Door Status)

SP models are fitted with a reed switch, by means of which it is possible to acquire the door status (when the electromagnet is powered), contact is NC when the door is open and NO when it is closed.

Switch Max Voltage	30Vdc, 30Vac	Switch Max Current	100mA
Switch Max Power	1W		



Powering Business Worldwide